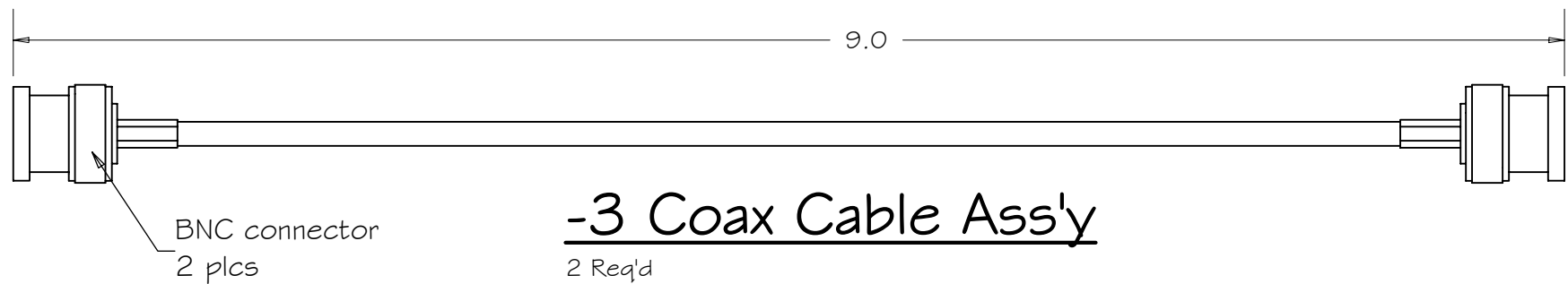
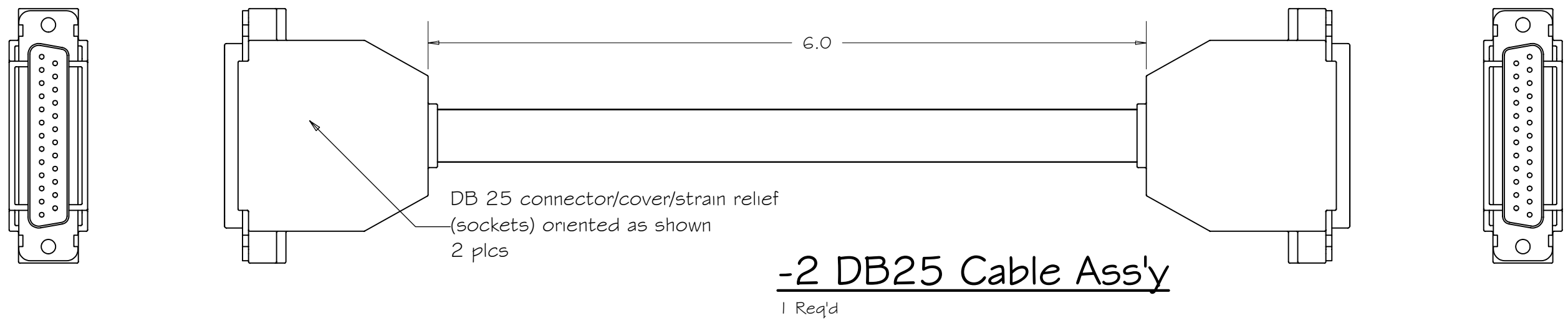
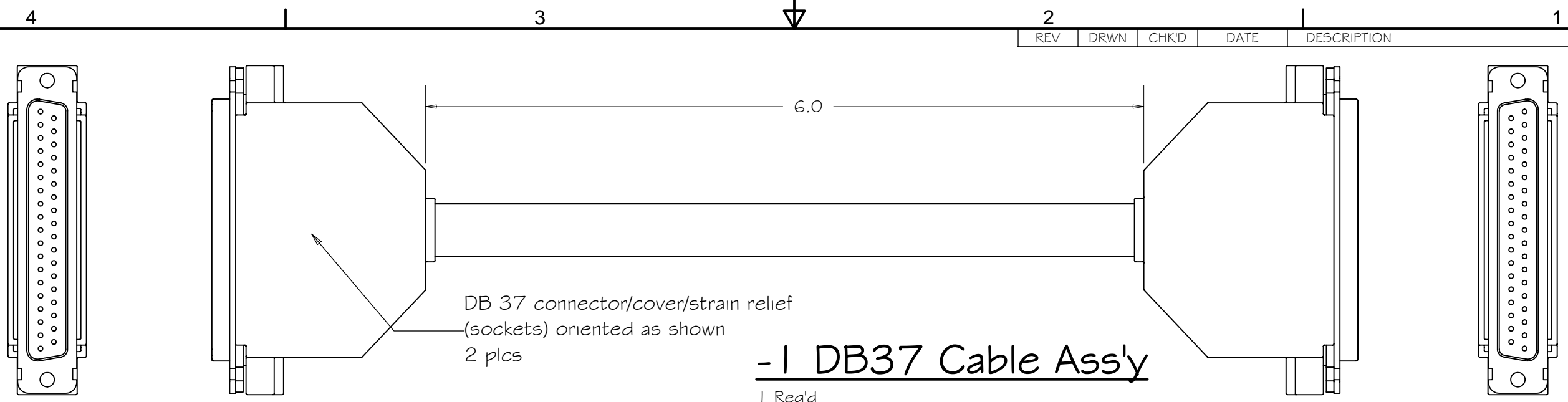


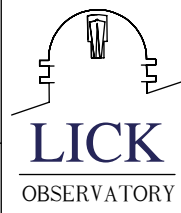
REV	DRWN	CHK'D	DATE	DESCRIPTION



Notes:
1. Physical configuration only
2. Wiring scheme and specifications in ref. TBD

UNLESS OTHERWISE NOTED DIMENSIONS ARE IN INCHES & TOLERANCES ARE AS FOLLOWS:
X.X: ±0.1000" X.XX: ±0.0100"
X.XXX: ±0.0050" X.XXXX: ±0.0001"
ANGLES: ±0.5° FINISH: 125 MICRO INCHES
BREAK ALL SHARP EDGES & CORNERS .002" MAX

MATERIAL	FINISH



DRAWN	lockwood	10/27/2005
CHECKED		
DESIGNED	lockwood	
ENGINEER		
FILENAME	controller cable 37 pin.iam	

Automated Planet Finder		
APF Dewar		
TITLE Controller-to-Preamp Cables		
PROJECT CODE	KFSCDF	DWG NO
NEXT ASSY	N/A	APF 1740

REV	prog
1	1